



JCSD

PARKS & RECREATION DEPARTMENT

2022 ANNUAL REPORT



LEADERSHIP

BOARD OF DIRECTORS



Ken J. McLaughlin
President, Division No. 1



Jane Anderson
Vice President, Division No. 5



Bart Moreno
Director, Division No. 4



Lupe Nava
Director, Division No. 2



Betty Folsom
Director, Division No. 3

PARKS & RECREATION DEPARTMENT

Administration

Steve Lawson, Director of Parks & Recreation

Wendy Landreth, Senior Administrative Assistant

Park Maintenance

Travis Viseth, Parks Superintendent

Steve Morris, Parks Field Supervisor

Stacy MacBeth, Senior Administrative Assistant

Recreation

Victoria Reyna, Recreation Superintendent

Duje Babarovic, Senior Recreation Coordinator

Fred Cervantes, Senior Recreation Coordinator

Caroline Morgan, Senior Recreation Coordinator

Nina Torres, Acting Senior Recreation Coordinator

Melissa Osuna, Administrative Assistant

TABLE OF CONTENTS

● Message From The Director	4
● Our Commitment To The Community	5
● About The Department	6
● Parks & Recreation Department Organizational Chart	7
● Parks & Schools Location Map	8
● Parks & Facilities	9
● What We Are	10
● By The Numbers	11
● Bouncing Back From The Pandemic	12
● CAPRA Accreditation	13
● Park Improvement Projects	14
● The Desi House Grand Opening!	15
● Parks/Facilities Maintenance & Operations Division	17
● Patrolling Our Parks	18
● JCSD Community Leader Award	19
● Sports Programming	20
● JCSD Youth Sports Committee	21
● Youth Programming	22
● Volunteer Program	24
● Recreation & Enrichment Classes/Facility Reservations	25
● Senior Programming	26
● Special Events	27
● Part-Time Recreation Employee Awards	28
● Marketing	29



MESSAGE FROM THE DIRECTOR

On behalf of the JCSD Parks & Recreation Department team, I'm pleased to present our 2022 Annual Report. This report is a testament to our department's unwavering commitment to providing exceptional parks, facilities, programs, events, and services to the Eastvale community.

I'm proud to report that 2022 was a year of tremendous growth and progress for our department. We opened The Desi House, expanded our senior services programming, and offered a new Easter community event, just to name a few. We also completed several significant projects, including park renovations, trail improvements, and facility upgrades, to ensure that our parks and facilities remain safe, attractive, and functional for years to come.

I'm extremely grateful for the dedicated work of our Board of Directors, staff members, partners, and volunteers, who have contributed to our department's success over the past year. I appreciate their passion, dedication, and hard work, and am fortunate to have such a talented and committed team.

As we look forward to the future, we are excited to continue our work in enhancing the quality of life for the Eastvale community through parks and recreation. We will continue to listen to our community's needs and preferences, adapt to new challenges and opportunities, and strive for excellence in all that we do.

Thank you for your continued support of JCSD Parks & Recreation Department. We hope you enjoy reading this annual report, and we look forward to serving you for years to come.



Steve Lawson
Director of Parks & Recreation

OUR COMMITMENT TO THE COMMUNITY

In serving the residents of Eastvale, the JCSD Parks & Recreation Department recognizes that we are entrusted with important duties and responsibilities. To be successful in our positions and to provide excellent customer service, we are committed to following:

Mission Statement

The JCSD Parks & Recreation Department strives to efficiently and effectively utilize available resources in the development and maintenance of quality park facilities and provide safe, fun and diverse recreational opportunities which enrich the quality of life for residents and visitors alike.

Vision

The vision of the JCSD Parks & Recreation Department is to deliver recreation and leisure opportunities that will improve the health and well-being of the community and to serve as stewards of the environment by managing and protecting our resources through the following:

- Recreation programs and activities that inspire personal growth, healthy lifestyles, and a sense of community.
- Safe parks and facilities that meet diverse community needs.

CORE VALUES



Speak Straight & Listen Generously – Speak honestly in a constructive way that moves the action forward. Listen with care and without judgement... most important, listen to understand and support. Say what you mean, and be willing to ask questions, share ideas, or raise issues that may cause conflict when it's necessary for team success. Address issues directly with those who are involved or affected. Rumors are destructive ... seek accurate information and only speak about things you know to be truthful.

Trust Our Team – Strong teams are successful not just because they work together, but because they trust each other. Seek to build trust in all relationships ... personally, professionally and within our community. Assume good intentions and always give people the benefit of the doubt. Recognize your weaknesses and have the trust to appreciate when your team is better at something than you.

Respect – Focus on being warm, friendly and approachable ... ensure civility in all our actions. Be graciously humble ... recognize your team's success over your own. Every interaction with our team or a customer is an opportunity to create deeper, more meaningful relationships. Respect our process and take great pride in achieving exceptional outcomes. Own and celebrate the team's success, but also hold yourself accountable and learn from your mistakes.

Inspirational – Be a leader ... take every opportunity to teach and help others learn and grow. Lead by example and never leave your team behind. When everyone is moving forward together, success takes care of itself.

Visionary – Determined by the thought of what tomorrow can bring ... driven by grit to get it done today. Look ahead, anticipate and dream big. Build fruitful relationships within the industry ... draw upon the success of others to shape our future. Without the vision, there is no action ... without direction, there is no purpose. Be relentless about improvement.

Empowered – Don't accept anything at "face value" if it doesn't make sense to you ... don't be afraid to ask "Why?". Have the confidence and curiosity to challenge the "way we have always done it". Have a Growth Mindset in everything you do. Ask questions when you don't understand. Healthy, vigorous debate creates better solutions. Find a way to be exceptional.

ABOUT THE DEPARTMENT

The JCSD Parks & Recreation Department has proudly offered parks & recreation services for the Eastvale community since 2003. We protect and maintain our parkland and urban forest as well as offer a wide variety of youth sports programs, recreational classes and activities, special events, senior services programs, volunteer and cultural opportunities, and art programs.

Full time employees: 25

Part time employees: 80+

1) ADMINISTRATION

- DEPARTMENT PLANNING
- BUDGET ADMINISTRATION
- GRANT ADMINISTRATION

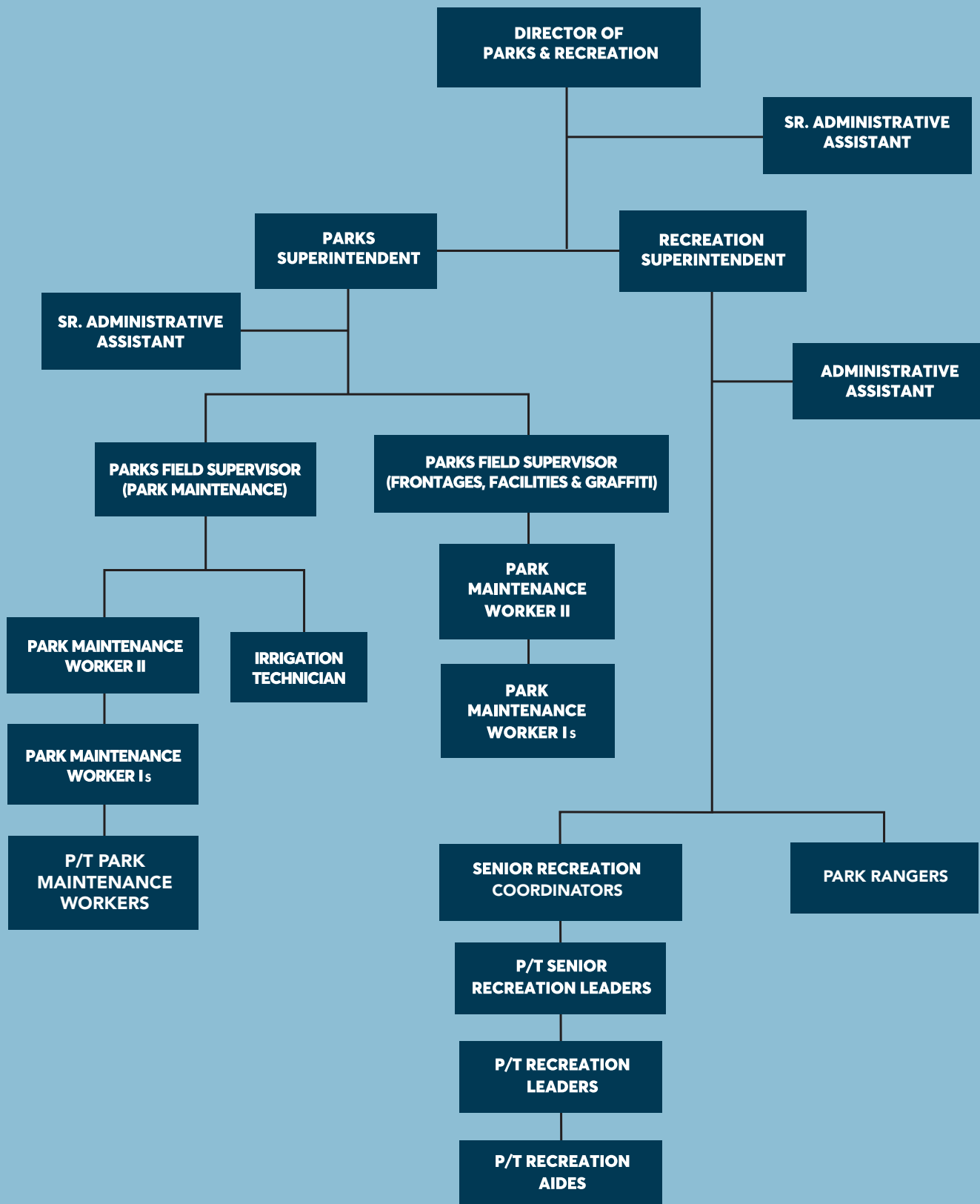
2) PARK/FACILITY MAINTENANCE & OPERATIONS

- PARK MAINTENANCE
- FACILITY MAINTENANCE
- FRONTAGE MAINTENANCE
- CONTRACT ADMINISTRATION
- GRAFFITI ABATEMENT
- CAPITAL IMPROVEMENT PROJECT MANAGEMENT

3) RECREATION & COMMUNITY SERVICES

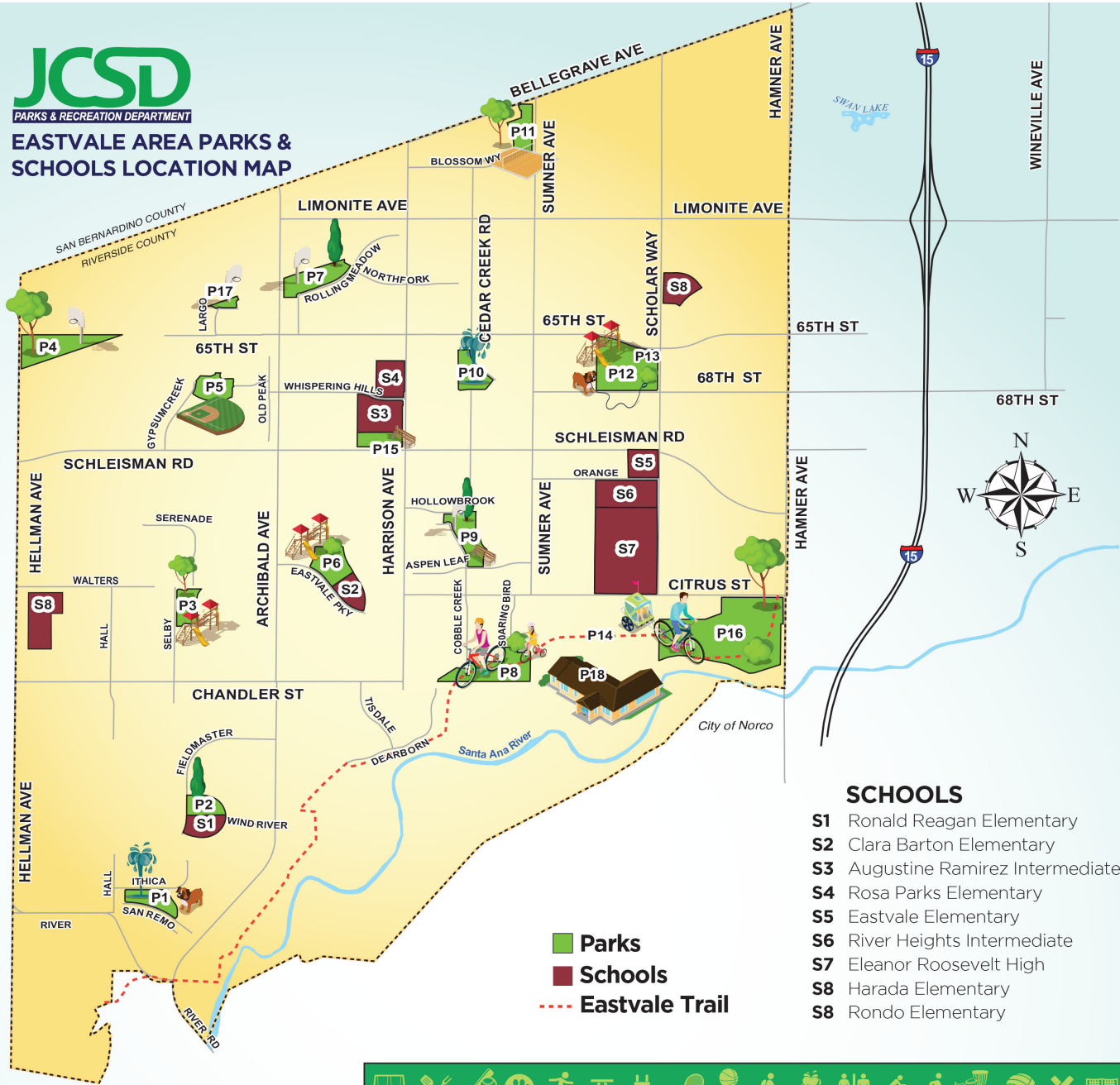
- SPECIAL EVENTS
- CONTRACT CLASSES
- YOUTH SPORTS/ADULT SPORTS
- SENIOR PROGRAMMING
- YOUTH PROGRAMS
- FACILITY AND ATHLETIC FIELD RENTALS
- VOLUNTEERS

PARKS & RECREATION DEPARTMENT ORGANIZATIONAL CHART





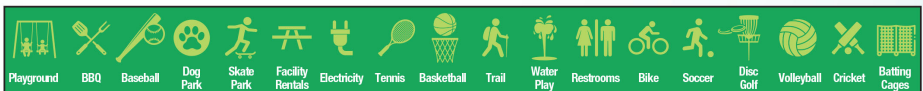
EASTVALE AREA PARKS & SCHOOLS LOCATION MAP



SCHOOLS

- S1** Ronald Reagan Elementary
- S2** Clara Barton Elementary
- S3** Augustine Ramirez Intermediate
- S4** Rosa Parks Elementary
- S5** Eastvale Elementary
- S6** River Heights Intermediate
- S7** Eleanor Roosevelt High
- S8** Harada Elementary
- S8** Rondo Elementary

PARKS AND FACILITIES



	Playground	BBQ	Baseball	Dog Park	Skate Park	Facility Rentals	Electricity	Tennis	Basketball	Trail	Water Play	Restrooms	Bike	Soccer	Disc Golf	Volleyball	Cricket	Batting Cages
P4 American Heroes Park 6608 Hellman Ave	★	★		★		★	★		★			★		★				
P10 Cedar Creek Park 6709 Cedar Creek Rd	★	★				★	★				★	★		★				
P1 Dairyland Park 14520 San Remo		★		★		★					★	★						
P5 Deer Creek Park 6785 Iron Horse Ln	★	★	★			★						★		★				
P15 Eastvale Community Center (ECC) 13820 Schleisman Rd						★	★		★			★						
P16 Eastvale Community Park (ECP) 12750 Citrus St							★			★		★	★	★				
P2 Half Moon Park 14383 Cherry Creek	★	★	★			★	★					★						
P12 Harada Heritage Park 13099 65th St	★	★	★	★	★	★	★					★		★			★	★
P13 Harada Neighborhood Center (HNC) 13099 65th St						★	★					★		★				
P7 James C. Huber Park 6411 Rolling Meadows	★	★	★		★	★		★	★			★		★				
P6 McCune Family Park 7450 Eastvale Pkwy	★	★	★			★	★	★	★			★		★				
P3 Mountain View Park 14444 Selby Ave	★	★				★	★	★	★			★		★				
P11 Orchard Park 5900 Festival Way	★	★	★		★	★			★			★		★		★		
P9 Providence Ranch Park 7250 Cobble Creek	★	★	★			★	★		★			★		★				
P8 Riverwalk Park 7674 Soaring Bird Ct	★	★				★				★		★	★		★			
P17 Symphony Park 13387 Largo Dr	★								★			★						
P18 The Desi House The Desi House 13215 Altfillisch Ct.						★				★		★						

PARKS & FACILITIES



AMERICAN HEROES PARK
6608 Hellman Ave.
Eastvale, CA 92880



JAMES C. HUBER PARK
6411 Rolling Meadows
Eastvale, CA 92880



CEDAR CREEK PARK
6709 Cedar Creek Road
Eastvale, CA 92880



MCCUNE FAMILY PARK
7450 Eastvale Parkway
Eastvale, CA 92880



DAIRYLAND PARK
14520 San Remo
Eastvale, CA 92880



MOUNTAIN VIEW PARK
14444 Selby Ave.
Eastvale, CA 92880



DEER CREEK PARK
6785 Iron Horse Lane
Eastvale, CA 92880



ORCHARD PARK
5900 Festival Way
Eastvale, CA 92880



EASTVALE COMMUNITY CENTER
13820 Schleisman Road
Eastvale, CA 92880



PROVIDENCE RANCH PARK
7250 Cobble Creek
Eastvale, CA 92880



EASTVALE COMMUNITY PARK
12750 Citrus Street
Eastvale, CA 92880



RIVERWALK PARK
7674 Soaring Bird Court
Eastvale, CA 92880



HALF MOON PARK
14383 Cherry Creek
Eastvale, CA 92880



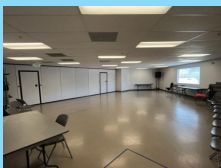
SENDERO PARK
6046 Frontera Way
Eastvale, CA 92880



HARADA HERITAGE PARK
13099 65th Street
Eastvale, CA 92880



SYMPHONY PARK
13387 Largo Dr
Eastvale, CA 92880



HARADA NEIGHBORHOOD CENTER
13099 65th Street
Eastvale, CA 92880



THE DESI HOUSE
13215 Altfillish Court
Eastvale, CA 92880

WHAT WE ARE



15
parks



240
acres of parkland



3
dog parks



3,280
trees



30,000
sq ft community center



5,000
sq ft neighborhood center



3.1
miles of trails



24
picnic shelters



5,550
sq ft special event venue on 2.5 acres

BY THE NUMBERS



2

splash pads



3

skate parks



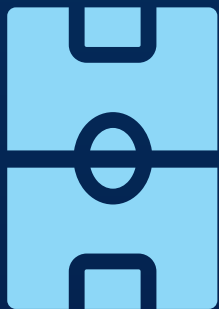
1

disc golf course



23

playgrounds



1

full-court
basketball court

11

half-court
basketball court



1

batting cage complex



14

ballfields

BOUNCING BACK FROM THE PANDEMIC

The JCSD Parks & Recreation Department faced many challenges during the COVID-19 pandemic, including closures of parks and recreational facilities, cancellation of programs and events, and staffing shortages due to illness and quarantine protocols. However, the department remained committed to its mission of providing high-quality parks and recreational opportunities for the community, and worked tirelessly to adapt and innovate during those unprecedented times.

Thankfully, the COVID-19 pandemic receded in 2022 and the community regained a sense of normalcy. The department was able to resume its full range of programming and services, including popular events like Picnic in the Park, Concerts in the Park, and Fall Festival, and our various youth sports leagues. Attendance at these events and programs exceeded pre-pandemic levels, with residents eager to get out and enjoy the outdoors.

Overall, the department's commitment to its mission allowed it to bounce back from the challenges of the pandemic. Its efforts to adapt, innovate, and invest in the community have positioned it for continued success in the years ahead.



CAPRA ACCREDITATION



The National Recreation and Parks Association's (NRPA) Commission for Accreditation of Park and Recreation Agencies (CAPRA) provides quality assurance and quality improvement of accredited parks and recreation agencies throughout the United States by providing agencies with a management system of best practices. CAPRA is the only national accreditation of park and recreation agencies and is a valuable measure of an agency's overall quality of operations, management, and service to the community. Achieving CAPRA Accreditation is the best way to demonstrate that an agency and its staff provide the community they serve with the highest level of service.

In 2015, JCSD became one of just five agencies in California to obtain CAPRA Accreditation. Accredited agencies must repeat this process every five years to stay in compliance with CAPRA's guidelines.

On September 10, 2021, the CAPRA commission formally approved JCSD's CAPRA reaccreditation. Impressively, we scored 100% on the assessment by meeting all 154 standards.

The following are 10 things CAPRA accreditation means to the residents we serve:

1) We operate using best practices.

- Our department was reviewed against 154 standards developed by the Commission for accreditation of Parks and Recreation Agencies and determined to meet the highest industry benchmarks to receive accreditation.

2) We are among the nation's best.

- Only 1% of Parks and Recreation agencies in the nation are accredited through CAPRA, including four in California.

3) We live our mission and vision.

- Our actions meet our objective to provide quality programs, events, parks, and facilities to enhance the quality of life for our residents.

4) Our parks and facilities are well maintained.

- Regular assessments and maintenance keep our facilities, 15 parks, and 5 miles of trails safe and accessible.

5) Our staff is highly qualified.

- Most of our full-time staff have specialized licenses, certificates, and advanced degrees.

6) We are fiscally responsible.

- Policies and guidelines determine how taxpayer dollars are spent and our budget receives an annual independent outside audit.

7) Our programs and services are diverse and accessible.

- We are committed to providing programming for all members of the community.

8) We value partnerships.

- Our department works with various service and youth sports organizations as well as local, state and national partners to address initiatives.

9) We are committed to excellence.

- CAPRA Accreditation is the highest designation available to park and recreation agencies and demonstrates our commitment to being a national leader.

10) Our top priority is the community we serve.

- Our decision-making process keeps Eastvale residents at forefront.

Currently there are only 192 accredited park and recreation agencies in the United States and JCSD is one of only three accredited agencies in California. JCSD will be up for reaccreditation in September 2026.

PARK IMPROVEMENT PROJECTS

The following projects were completed in 2022:



Playground Resurfacing at Orchard Park

Removed and replaced rubberized surface of the playground areas.

Harada Heritage Park Ballfield Improvements

Installed additional irrigation and sod on Field 1.



Frontage Plant and Tree Replacement

A total of 88 trees were removed, while 196 new ones were planted within frontages and parks in Eastvale.

Basketball Court Resurfacing at James C. Huber Park

Removed and replaced rubberized surfacing on the two basketball courts.



Park Furniture Replacement at James C. Huber Park

Removed and replaced aging park furniture with new concrete benches, picnic tables, trash cans, etc.

THE DESI HOUSE GRAND OPENING!

THE *Desi House*

In 1960, Desi Arnaz, Sr. OF "I Love Lucy" fame, built a 5,500 square foot home in Corona, California that mirrored his childhood home in Santiago de Cuba, Cuba. The home would become his playground away from the Hollywood life, where he would entertain his good friends in the rich ranchlands.

After his death in 1986, the Altfillisch family purchased and relocated the house to its current location on a 2.5-acre parcel in Eastvale, California. When the surrounding 365 acres were sold years later for a new housing development, the deal stipulated that the house, with its unique architectural details and historic charm, remain intact. As such, in 2015, it was purchased by JCSD as part of the Santa Ana River Trail Extension Project with the commitment to renovate it to become a premier recreation and leisure venue. Upon purchasing, JCSD appropriately named the property "The Desi House."

JCSD's vision for The Desi House was clear from the outset – to create an accessible venue that provides the following: ample space to offer a variety of public recreation and community services programming; the ability to host some of life's most significant moments, such as weddings, anniversaries, and baby showers; and meeting spaces for corporate retreats, training workshops, and informational seminars. To meet this vision, JCSD and its architectural design team worked closely with the Eastvale community and stakeholders to provide input on the overall renovation design and feedback on the potential uses of the facility.

The renovation occurred through a two-phased construction project. Completed in May 2020, Phase I consisted of improvements related to the land surrounding the house, specifically the installation of the following: a lighted concrete path of travel; open turf; two gazebos; a water fountain; various trees and plant materials; a parking lot; restrooms; garden benches; new patios; and a monument sign. Phase II, which was completed in December 2021, consisted of the renovation of the interior of the house, installation of a new roof, and painting of the exterior of the home.



Throughout the design and renovation process, JCSD went to extraordinary lengths to preserve the home's integrity. Details like the kitchen tile work, the layout of the living space and fireplace, and the location of the outdoor fountain were preserved to showcase the charm. The result is a venue with indoor and outdoor spaces designed with a modern feel while keeping the authentic Cuban flare Desi Arnaz, Sr. created. For example, as you enter the home, you are greeted with the original Spanish wood engraving above the front door, which translates to "Welcome to the house of Mr. Desiderio Alberto Arnaz, and below this roof, a pleasant welcome is offered to you. Built by Jaime Hulsey. 1960 AD."

On February 12, 2022, The Desi House opened to the public with a successful ribbon-cutting event that included local elected officials and community partners, such as the Riverside County Sheriff's Department, City of Eastvale, and Eastvale Girl Scouts. Thousands of residents attended the venue tours offered throughout the day and were highly complimentary of the entire property.

The Desi House is truly a gem and generational treasure for the Eastvale community and will create countless memories for years to come.

13215 Altfillisch Ct., Eastvale, CA 92880 • (951) 727-3524
TheDesiHouse@jcsd.us • www.thedesihouse.com



PARKS/FACILITIES MAINTENANCE & OPERATIONS DIVISION

JCSD operates and maintains 15 public parks, two community centers, and a special event venue that offer a diverse array of amenities for residents of all ages. In addition, we're responsible for graffiti abatement and maintaining over nearly 5 million square feet of public frontage landscaping within the cities of Jurupa Valley and Eastvale.

FRONTAGE MAINTENANCE



4,155,054

Total square feet of frontage and medians maintained in Eastvale



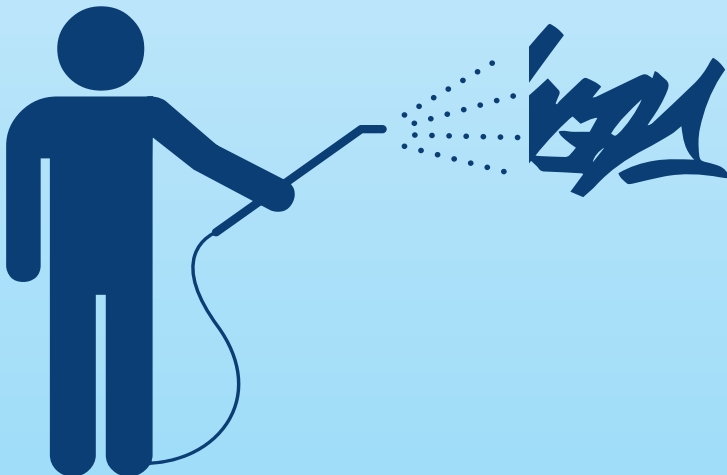
877,821

Total Square footage for frontage and medians maintained in Jurupa Valley



4,398

Trees trimmed on the Eastvale frontages



Jurupa Valley (District Territory)

1077

of graffiti incidents removed

25684

Total square footage of graffiti removed



GRAFFITI ABATEMENT

Eastvale (District Territory)

770

of graffiti incidents removed

5543

Total square footage of graffiti removed

Jurupa Valley/Rubidoux (Contract Area)

515

of graffiti incidents removed

9707

Total square footage of graffiti removed

PATROLLING OUR PARKS

The protection and preservation of our parks and facilities, ensuring that they remain safe and enjoyable for all, rely heavily on the crucial role played by the JCSD Park Ranger. The Park Ranger is entrusted with the responsibility of monitoring park activities, enforcing regulations, and responding to emergencies, while also providing assistance to park users, addressing concerns, and facilitating picnic reservations and special events. In addition, JCSD contracts with the Riverside County Sheriff's Department for a Sheriff's Deputy to patrol our parks.

In 2022, our dedicated team of a full-time Park Ranger and contracted Riverside County Sheriff's Department Deputy worked tirelessly to provide over **4,000** hours of valuable patrolling during evenings and weekends.



JCSD COMMUNITY LEADER AWARD

The JCSD Parks & Recreation Department genuinely values our community partners and understands their roles in helping us best serve the community and vice-versa. To ensure our many community partners understand their importance to us and to publicly recognize the outstanding efforts of those partners that go above and beyond, we created the "JCSD Community Leader Award" in July 2022. Award recipients are selected on a quarterly basis by JCSD Parks & Recreation Department staff and honored at JCSD Board meetings.



On July 25, 2022, the JCSD Board of Directors honored George Rife as the first JCSD Community Leader Award recipient! George is the President of the Eastvale Kiwanis Club and is always willing to support and coordinate volunteers for many of our special events and programs. As a trusted friend of JCSD, he's also been instrumental in connecting us with other community partners, such as the Roosevelt High

School Key Club, Chinese American Volunteer Association, and the Rondo School of Discovery Photo Club, to name a few. We thank George for his commitment to working with JCSD and improving the great communities we serve.

On October 10, 2022, the JCSD Board of Directors honored Vantage Point Church as the second JCSD Community Leader Award recipient. At the time of award, Vantage Point Church had volunteered over 1,400 hours for JCSD, including helping with our Easter event, annual campout, and monthly food distribution. They're always willing to help us and we're blessed to have them as a community partner.



SPORTS PROGRAMMING



JCSD Youth Volleyball League

200
Spring volleyball players
240
Fall volleyball players

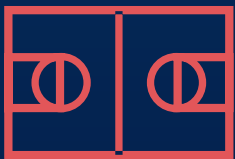


JCSD Youth Basketball League

440
Summer basketball players
400
Winter basketball players



Youth Sports Classes



121
Pee Wee Basketball Class Participants
124
Youth Basketball Class Participants
142
Youth Volleyball Class Participants

12,070 Open Gym
Participation visits

281 Total
Field Rentals

JCSD YOUTH SPORTS COMMITTEE

The following youth sports organizations utilize JCSD Parks for practices and games:



**Eastvale Girls
Softball Association**

**Total Participants
350**



**Eastvale
Little League**

**Total Participants
1,200**



**Empire
Soccer Club**

**Total Participants
1,500**

The JCSD Youth Sports Committee consists of JCSD staff and representatives from each of the three youth sports leagues that utilize JCSD Parks: 1) Eastvale Girls Softball Association; 2) Eastvale Little League, and 3) Empire Soccer Club.

The Youth Sports Committee meets monthly at the Eastvale Community Center to discuss field use, and to ensure communication between JCSD and the local sports organizations is streamlined.

YOUTH PROGRAMMING

KIDS ZONE PROGRAM



The Kids Zone Program offered all day programming from 6:30am-6:00pm at local Eastvale elementary schools including: Clara Barton Elementary, Eastvale Elementary, Rosa Parks Elementary, Ronald Reagan Elementary, and Philistine Rondo School of Discovery. Activities included homework help, group games, crafts, and more.

Total Attendees: **55,549**

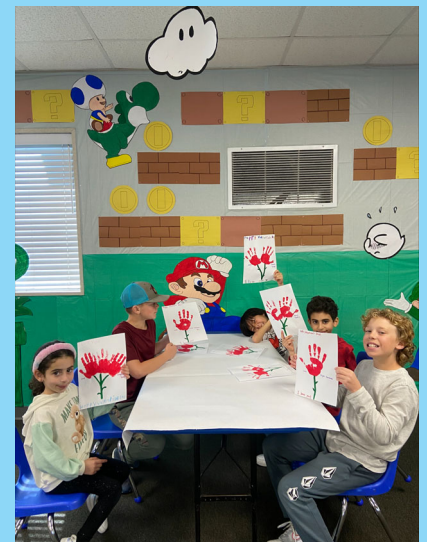
Clara Barton Elementary School: **12,906**

Eastvale Elementary School: **6,193**

Philistine Rondo School of Discovery: **13,572**

Reagan Elementary School: **11,286**

Rosa Parks Elementary School: **11,592**



SUMMER CAMP



Summer Camp was an 8-week program for Eastvale youth, offering them the chance to play, learn, and explore through a variety of fun activities! The camp hosted over **347** attendees and was a big hit for the community!

YOUTH PROGRAMMING

TINY TOTS

The Tiny Tots Program was offered on a quarterly basis and provided a pre-k style of learning for ages 2-3 and 4-5. The program was hosted at the Harada Neighborhood Center and brought in nearly **900** registered children!



MOMMY & ME

The Mommy & Me Program is a parent-participation pre-K experience for children aged 2-5, hosted at the Eastvale Community Center. In 2022, over 400 children attended.



VOLUNTEER PROGRAM

Volunteers are the backbone of the JCSD Parks & Recreation Department. They provide invaluable assistance with administering programs, special events, projects, and general administrative assistance. Without volunteers, the Department would not have the resources to accomplish its goals and provide the community with such a wide variety of programs and activities.

2,200

Approximate number of donated hours in 2022

\$70,000

Estimated value of or the equivalent of nearly one full-time employee!

(based on the independent sector's value of a volunteer hour - \$31.80)



RECREATION & ENRICHMENT CLASSES

132 TOTAL CLASSES OFFERED

6,417 PARTICIPANTS



FACILITY RESERVATIONS



333

Reservations between the Eastvale Community Center, The Desi House, and the Harada Neighborhood Center



6

BLOOD DRIVES



337

Picnic Shelter Reservations



SENIOR PROGRAMMING

At JCSD, we are dedicated to growing our Senior Programming to better serve our community. In 2022, we made a significant investment to expand our services, aiming to become the premier destination for seniors in the City of Eastvale. This year, we have accomplished the following:

- Expanded all aspects of our senior programming by hosting monthly birthday celebrations, holiday celebrations, enrichment classes, and senior specific special events.
- Opened The Desi House for Senior Programming Tuesday-Thursday.
- Created intergenerational programs with the students of Eleanor Roosevelt High School ASB such as the InterAct Club and Students and Seniors which encompassed a Friendsgiving and all holiday parties.
- Awarded the Supporting Healthy Aging through Parks and Recreation grant from the NRPA for \$3,000 to start our Tai Chi Program.



SPECIAL EVENTS

The following community-wide special events were offered in 2022:

- **EGG-Cellent Adventure** - *April 16 at Eastvale Community Park.* With 1,700 attendees present, kids were able to take part in egg hunts with fantastic prizes, vendors, games, and even photos with the Easter Bunny himself!
- **Community Campout** - *May 7-8 at Harada Heritage Park.* This event hosted around 160 attendees. Families were able to bring their tents and experience the outdoors with plenty of activities and memories made.
- **Picnic In The Park** - *June 24-26 at Eastvale Community Park.* With over 20,000 community members attending picnic in the park over the weekend, this has become our premier event for Eastvale. Full of live entertainment, family friendly games, food and retail vendors, and a fantastic fireworks show!
- **Movies in the Park** - *Saturday Nights during Summer at Various Parks.* This event took place during the summer months and gave different parks and communities the opportunity to come together and enjoy movies at dusk.
- **Concerts in the Park** - *Every Friday from July 8 to August 12 at Harada Heritage Park.* This weekly event hosted around 1,500 attendees every Friday and brought in the summer months with a different tribute band each week.
- **Friday Flicks & Food Trucks** - *Every Friday from September 18 - October 30 at Eastvale Community Park.* This weekly event brought in hundreds of community members for a screening of popular films with vendors for everyone in the family to enjoy.
- **Fall Festival** - *October 1 at Harada Heritage Park.* Bringing in over 2,000 attendees, Fall Festival ushered in Fall with live performances, fall themed activities, costume contests, and food and retail vendors for the community.
- **Winter Wonderland** - *December 3 at Eastvale Community Center.* With 3,000 residents in attendance, Winter Wonderland was our big Christmas celebration with a tree lighting ceremony, live performances, arts and crafts, and even snow sleds for the kids!
- **Breakfast with Santa** - *December 3 at Eastvale Community Center.* Breakfast with Santa was enjoyed by over 100 attendees as families had the opportunity to have a breakfast with the big man himself!



PART-TIME RECREATION EMPLOYEE AWARDS

The JCSD Parks & Recreation Department recognizes the importance of motivating, rewarding and developing employees. As such, this program has been developed to recognize individual efforts and to encourage and empower employees to work to the fullest extent of their capabilities. Part-time employees are one of the Department's most valuable assets and play a critical role in contributing to the attainment of JCSD's goals, objectives and mission. To that end, the following three awards were given out to deserving part-time employees for their work in 2022:

Most Valuable Player – Eliza Agredano

This award is given to the employee who consistently exceeds the expectations of their position, performing at a high level beyond normal job requirements.

Coach's Award – Melissa Torres

This award is given to the employee who consistently demonstrates an ability and willingness to work positively, respectfully, and effectively with both external and internal customers.

Utility Player Award – Gilbert Rodriguez

This award is given to the employee who performs various roles, or is consistently willing to assist multiple programs, especially when the department is short-staffed.

Rookie of the Year – Hannah Villasenor

This award is given to the employee who has been a part of the team less than one year and displays the characteristics and performance consistent with the department's core values.

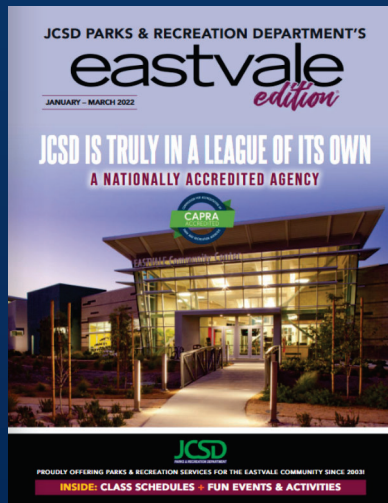


MARKETING

EASTVALE EDITION

Brochures Distributed: In 2022, we completed four separate mailings, distributing a total of **62,000** brochures, with **15,500** copies printed for each mailing. More than **53,020** views for digital brochure.

More than **50,000** views of the brochure in digital format.



SOCIAL MEDIA



FACEBOOK
@JCSOParks



INSTAGRAM
@JCSOParks



TWITTER
@JCSOParks



TIKTOK
@JCSOParks



YOUTUBE
@JCSOParks1894



JCSD

PARKS & RECREATION DEPARTMENT

13820 Schleisman Road
Eastvale, CA 92880
(951)727-3524
parks@jcsd.us
jcsdparks.us