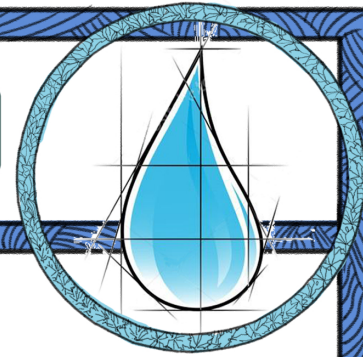


IRRIGATION INFORMATION



KEY COMPONENTS



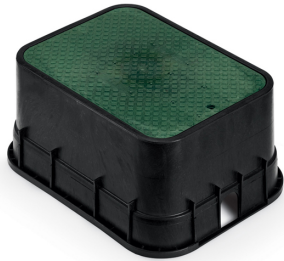
VALVE ASSEMBLY

Specs: Valve, with filter and pressure regulator.
Function: opens water flow to landscape irrigation, wired to automatic timer/controller. 1 Valve per "zone".



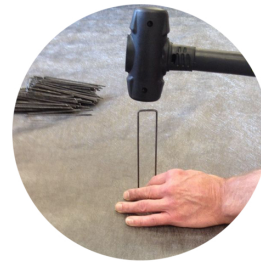
DRIP TUBE FITTINGS

Specs: Rugged plastic, barbed
Function: Connect pieces of drip tube together, different shapes available.



VALVE BOX

Specs: High strength plastic, multiple sizes. allow room around valves.
Function: Protects valves, keeps valves out of site below the ground. easy access for



STAPLES

Specs: Industrial strength Steel
Function: Hold down drip line, weed cloth, etc. Place along drip lines every 12" or as necessary.



P.V.C. PIPE

Specs: Schedule 40, 3/4" size for most residential landscapes.
Function: Buried @ least 12" below ground, these high strength plastic pipes take water to where its needed.



FLUSH VALVE - AUTOMATIC

Specs:
1 Gallon Flush Valve w/ barbed fitting
Function: Eliminates clogging. Promotes long-term performance of the drip irrigation system. Protects your drip system.

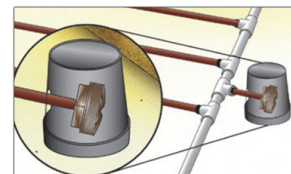


P.V.C. FITTINGS

Specs: Variety of PVC fittings, products shown are "slip fittings", not "threaded fittings". Use the proper PVC primer and glue.
Function: Connects PVC pipe

FLUSH BOX

Specs: High strength Plastic, 6" dia. minimum.
Function: Stores and protects the flush valve at end of drip lines.



DRIP EMITTERS

Function: Connects 1/2" line to 1/4" line and regulates flow of water to plants. See "Point-Source Method" Sheet.

AUTOMATIC CONTROLLER



POLY TUBING - DRIPLINE OR BLANKLINE

Specs: Rugged polyethylene plastic, pressure compensating emitters are welded to the inside wall at different spacings, or tube can be blank.
Function: Connected to PVC, provides water to plants, laid at the surface.



Function: This entry-level residential controller offers simple operation with easy-to-configure control for up to 8 stations (zones).