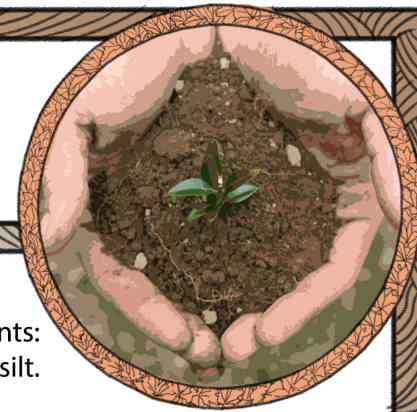


# SOIL TESTING MADE EASY

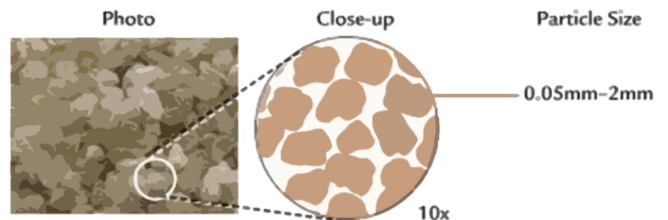


## What is Soil?

Soil is the surface layer of earth, supporting plant life. It is primarily comprised of 3 elements: Sand, Silt, and Clay. An ideal mix of these soil types is about 40% sand, 40% clay, and 20% silt. This combination yields loam, and is what most gardeners aim for, as it is best for plants.

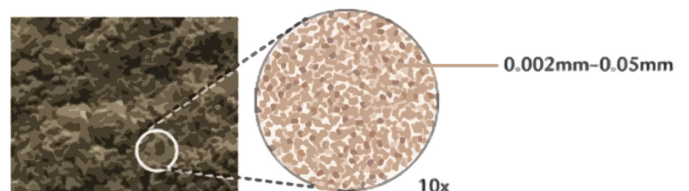
### Sand

The largest particle in soil, sand allows for quick drainage of both water, and nutrients.



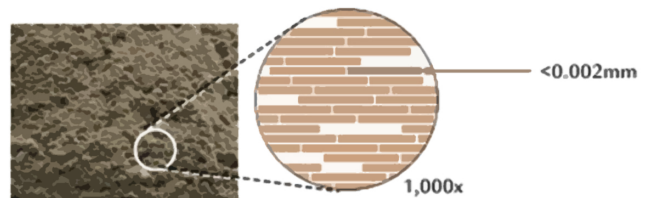
### Silt

The size of silt is between clay and sand, drains poorly, but can retain nutrients better than sand.



### Clay

The smallest particle in soil, it can store water well and contains nutrients plants need.



## "The Feel Test"

Not all soil was created equal; a soil test can help determine which plants are suited to your specific soil. Once you follow this basic guide, you better understand what you are working with, and if you need to add amendments like compost, mulch or manure. You can even get a better idea of how much water your plants will need. Follow the chart on the right, from top to bottom, to figure out what type of soil you have.

